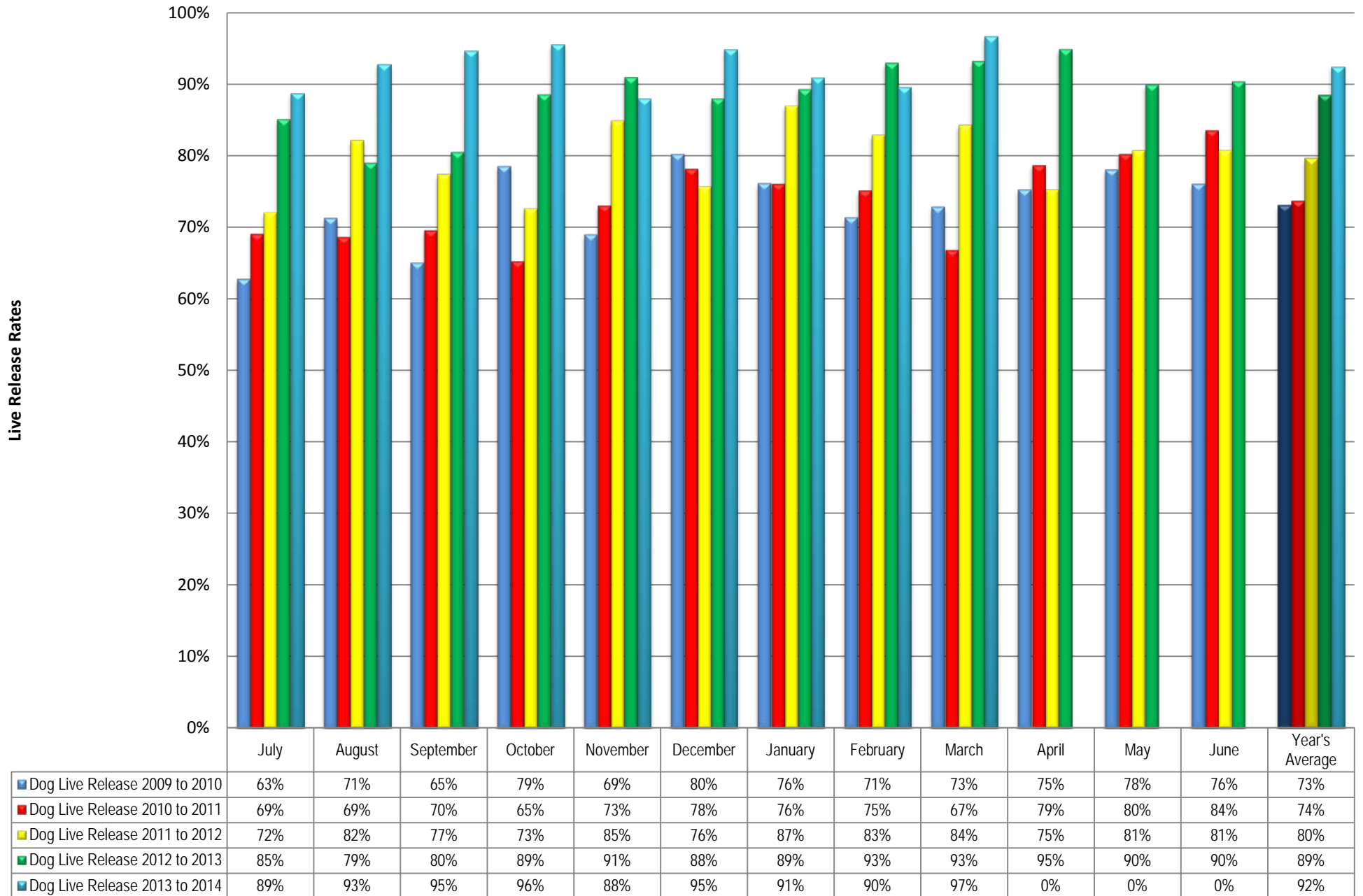


YCAS Dog Live Release Rates

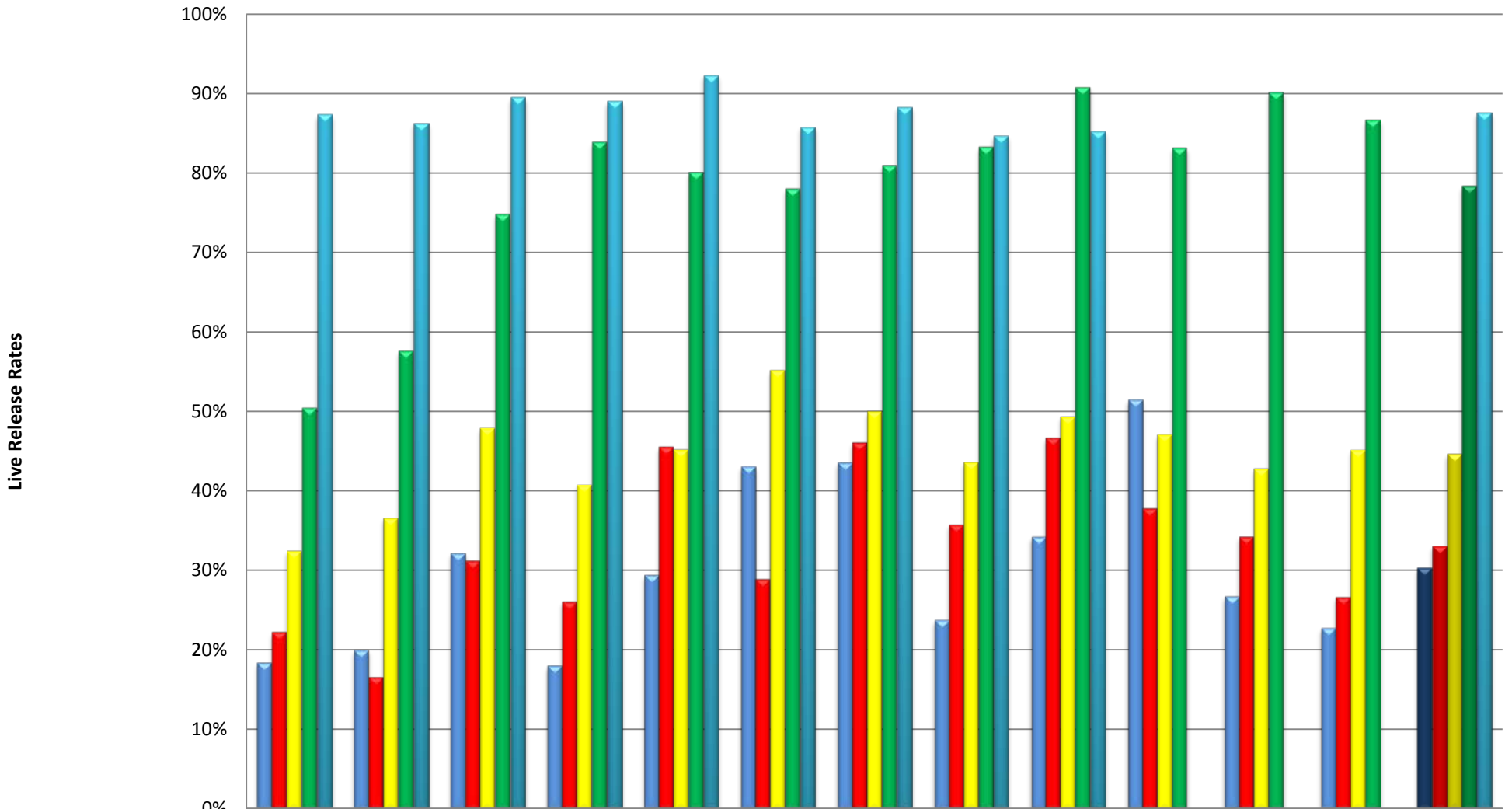
Fiscal Years 2009-2010 through March 2014 (Not including Owner Euthanasia Request Dogs)



YCAS Cat Live Release Rates

Fiscal Years 2009-2010 through March 2014

(Not including Owner Euthanasia Request Cats or TNR Euthanized for Medical)

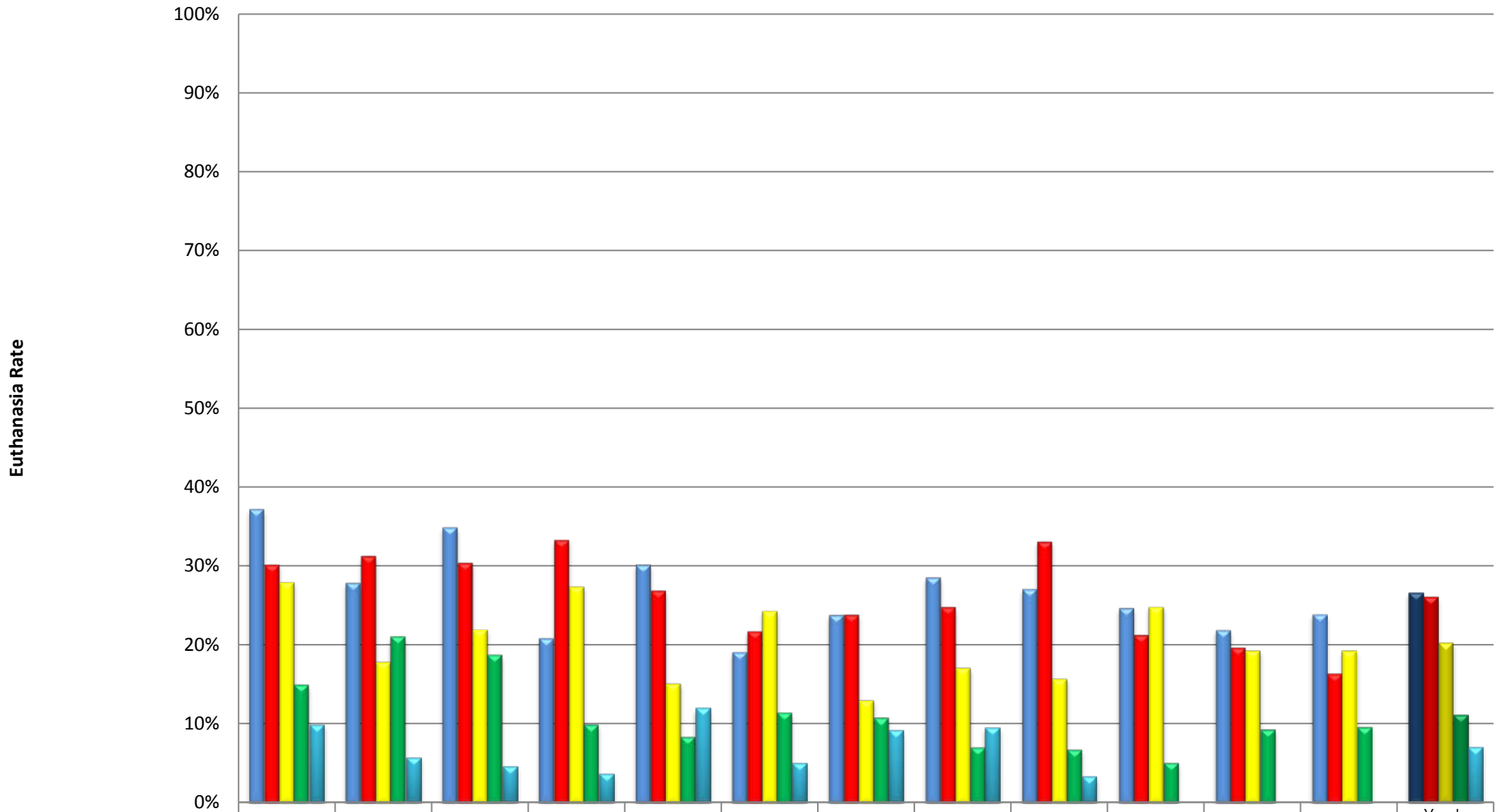


	July	August	September	October	November	December	January	February	March	April	May	June	Year's Average
■ Cat Live Release 2009 to 2010	18%	20%	32%	18%	29%	43%	44%	24%	34%	52%	27%	23%	30%
■ Cat Live Release 2010 to 2011	22%	17%	31%	26%	46%	29%	46%	36%	47%	38%	34%	27%	33%
■ Cat Live Release 2011 to 2012	32%	37%	48%	41%	45%	55%	50%	44%	49%	47%	43%	45%	45%
■ Cat Live Release 2012 to 2013	51%	58%	75%	84%	80%	78%	81%	83%	91%	83%	90%	87%	78%
■ Cat Live Release 2013 to 2014	87%	86%	90%	89%	92%	86%	88%	85%	85%	0%	0%	0%	88%

YCAS Dog Euthanasia Rates

Fiscal Year 2009-2010 through March 2014

(Not including Owner Euthanasia Request Dogs)

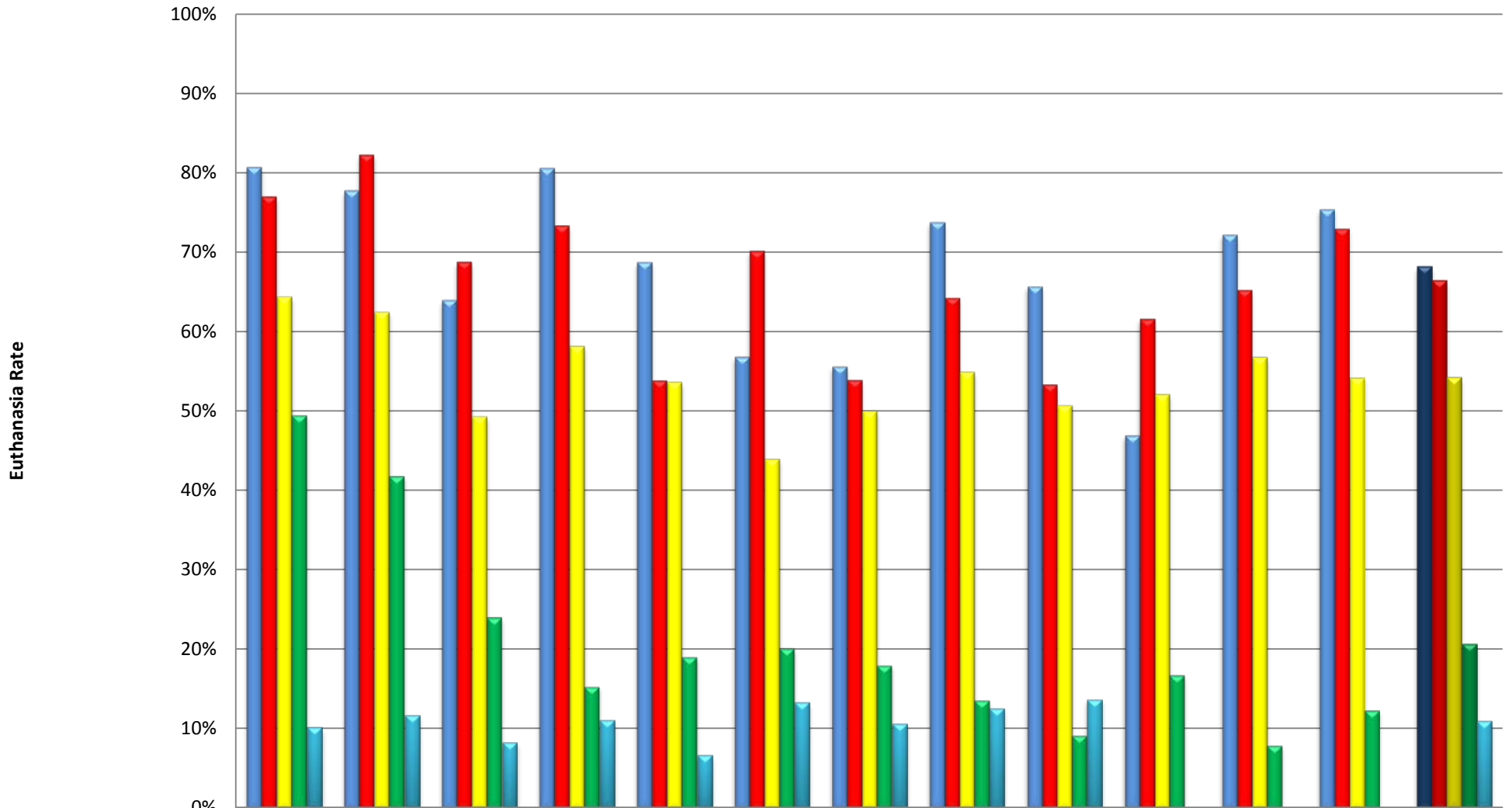


	July	August	September	October	November	December	January	February	March	April	May	June	Year's Average
■ Dog Euthanasia 2009 to 2010	37%	28%	35%	21%	30%	19%	24%	29%	27%	25%	22%	24%	27%
■ Dog Euthanasia 2010 to 2011	30%	31%	30%	33%	27%	22%	24%	25%	33%	21%	20%	16%	26%
■ Dog Euthanasia 2011 to 2012	28%	18%	22%	27%	15%	24%	13%	17%	16%	25%	19%	19%	20%
■ Dog Euthanasia 2012 to 2013	15%	21%	19%	10%	8%	11%	11%	7%	7%	5%	9%	10%	11%
■ Dog Euthanasia 2013 to 2014	10%	6%	5%	4%	12%	5%	9%	10%	3%	0%	0%	0%	7%

YCAS Cat Euthanasia Rates

Fiscal Year 2009-2010 through March 2014

(Not including Owner Euthanasia Request Cats or TNR Euthanized for Medical)



	July	August	September	October	November	December	January	February	March	April	May	June	Year's Average
■ Cat Euthanasia 2009 to 2010	81%	78%	64%	81%	69%	57%	56%	74%	66%	47%	72%	75%	68%
■ Cat Euthanasia 2010 to 2011	77%	82%	69%	73%	54%	70%	54%	64%	53%	62%	65%	73%	66%
■ Cat Euthanasia 2011 to 2012	64%	62%	49%	58%	54%	44%	50%	55%	51%	52%	57%	54%	54%
■ Cat Euthanasia 2012 to 2013	49%	42%	24%	15%	19%	20%	18%	14%	9%	17%	8%	12%	21%
■ Cat Euthanasia 2013 to 2014	10%	12%	8%	11%	7%	13%	11%	13%	14%	0%	0%	0%	11%